

PeerWORKS

Applicant Organization:

The University of Arizona

Project Director:

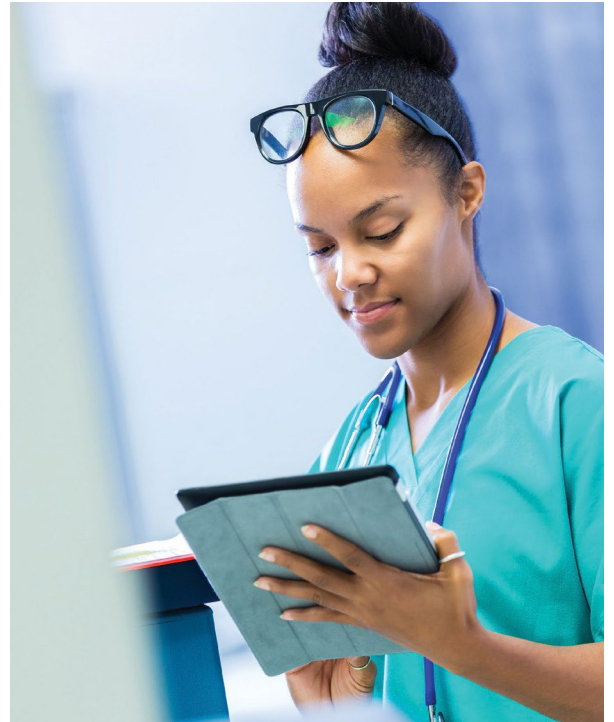
Jennifer Schultz De La Rosa, PhD, Assistant Research Professor, College of Medicine-Tucson, Director of Strategy, Comprehensive Center for Pain and Addiction (CCPA)

Co-investigators:

Benjamin Brady, DrPH, Cheryl Glass, MBA

Goal: The goal of PeerWORKS is to increase the number of peer support specialists by recruiting and training a diverse workforce prepared to serve children, adolescents, and transitional-aged youth and work in communities with high behavioral health disorder treatment needs.

Summary: The University of Arizona Comprehensive Pain and Addiction Center, in collaboration with the Workforce Development Program, the Colleges of Public Health and Medicine, and the Arizona Center for Rural Health, received a four year, \$2.2 million HRSA grant award. The collaboration launched PeerWORKS. PeerWORKS will establish relationships with community partners and promote experiential and collaborative training through team-based models of care in integrated, primary care, and interprofessional health settings.



Project Objectives:

- Objective 1:** Create up to 11 experiential training sites for peer support specialists through interdisciplinary training in behavioral health.
- Objective 2:** Train at least 21 individuals per year and enroll at least 50% of Level I graduates into the Level II apprenticeship program.
- Objective 3:** Establish partnerships with at least five organizations operating in seven US-Mexico border and rural Arizona counties to ensure participation from individuals with different sociocultural backgrounds and provide trainees opportunities for field placements, community education, career development, and job placement.
- Objective 4:** Use technology integration in peer support specialist training programs like telehealth services, digital health literacy, and distance learning.
- Objective 5:** Reduce financial barriers by providing support to at least 21 trainees per year via tuition/fees, supplies, and stipend support.

► **For more information or to apply to PeerWORKS, go to www.fcm.arizona.edu/outreach/peerworks**